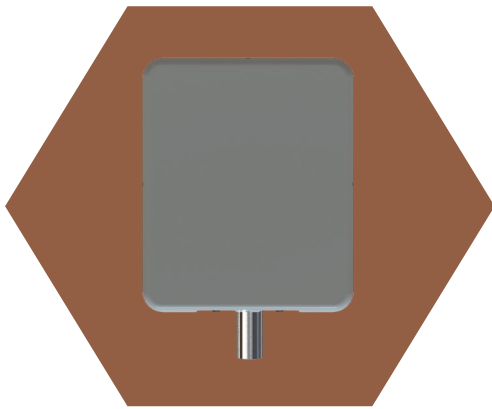




Ideal for

- *MIMO LTE rooftop mounting*
- *Failover for wireless Internet backup*

Great Dane
PTA Series



- *MIMO LTE*
- *IP54 RATED*

Features

- *698 MHz - 2200 MHz**
- *HIGH EFFICIENCY*
- *HIGH PERFORMANCE*

**See inside for details*



Product Description

The Great Dane Series antennas are high-performance, omnidirectional antennas ideal for pole mounting and easy rooftop installation. The Great Dane antennas are perfect for a wide variety of outdoor and IoT applications.

The Great Dane series antennas are omnidirectional, pole or mast mounted, MIMO LTE antennas.

Patent pending.



Frequency Ranges

LTE Frequency Range

617 - 894 MHz

1695 - 2200 MHz

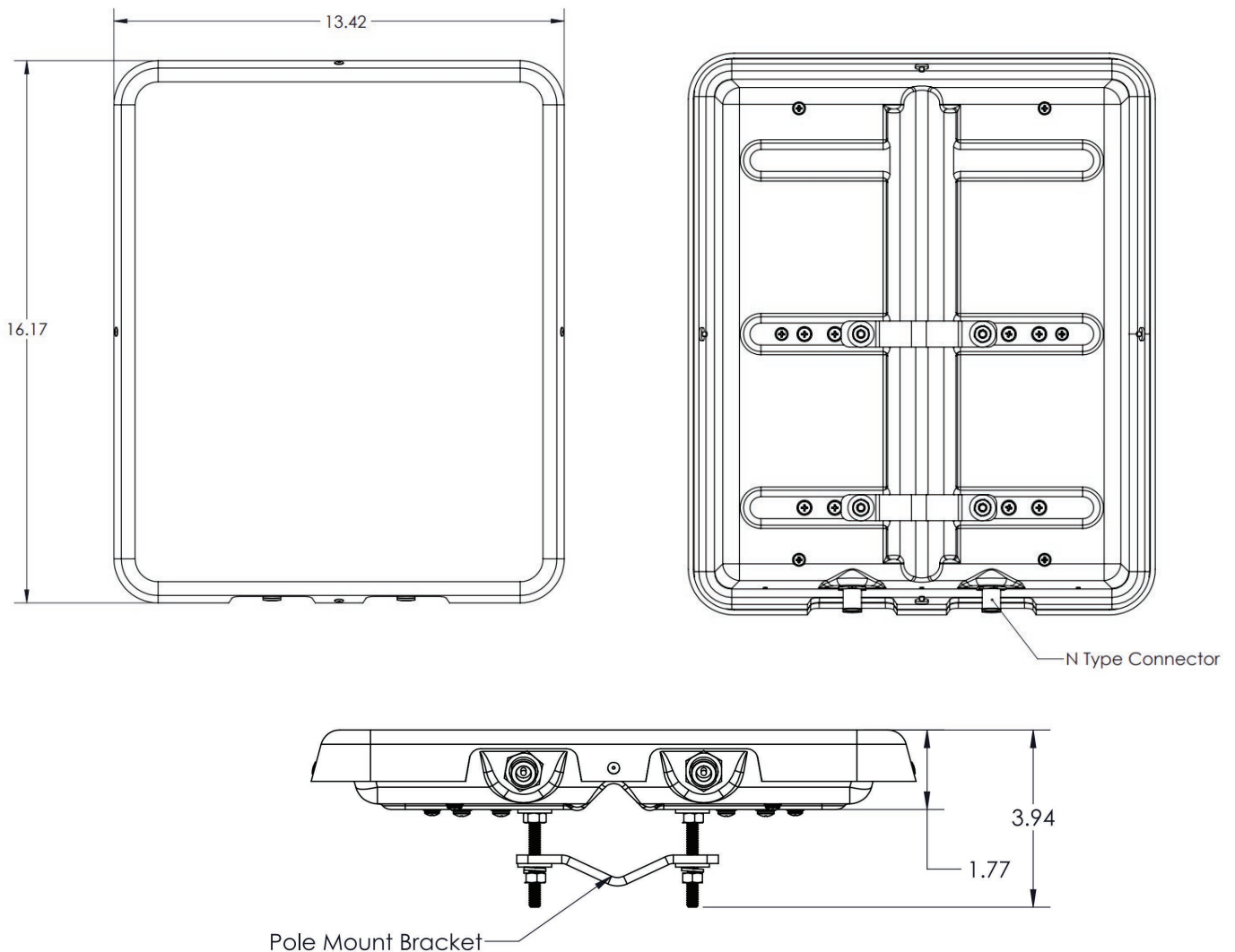
LTE Bands

North America	B2, B4, B5, B12, B13, B14, B17, B25, B26, B29, B66
EMEA	B1, B3, B7, B20, B28
Mechanical	
Dimensions	16.3 in × 13.3 in × 1.5 in excluding mounting bracket
Mounting	Bracket and clamp to pole 2-3 inch diameter
Environmental	
Operating Temperature	-40°C to 85°C
Rating	IP54 outdoor

Electrical Specifications

ID	Port	Parameters	Units	Typ.
Radiated Efficiency	LTE-1,2	698 – 894 MHz	%	80
	LTE-1,2	1695 – 2200 MHz		90
Peak Gain	LTE-1,2	698 – 894 MHz	dBi	5
	LTE-1,2	1695 – 2200 MHz		7
Return Loss (50 Ω)	LTE-1,2	698 – 894 MHz	dB	6
	LTE-1,2	1695 – 2200 MHz		12
Isolation	LTE-1 to 2	698 – 960 MHz	dB	21
	LTE-1 to 2	1695 – 2200 MHz		24
Polarization	LTE-1,2			Linear
Max Input Power	LTE-1,2		Watts	5
RF Connectors	LTE-1,2	N Female		

Product Specifications



Ordering

Our Great Dane antennas come in and beige with N type female connectors and no cable, or 50' of our LSR400 cable. Please note that a jumper cable (LSR19512) may be required.

Configurations	Order Number	Description
2:1	PTAGD2L-NF	2 LTE, N type female connectors, beige, no cable
	PTAGD2L50	2 LTE, N type female connectors, beige, 50' cable (LMR400)

Notes:

N type connector is recommended for outdoor usage due to it being waterproof. N type is also best used for cable runs longer than 25ft due to it being a stronger connection.

SMA connectors have a max torque of 3-5 inch lbs.

Part Number Key

Part number example for a 2:1 Great Dane antenna:

PTAGD2L50

Description	Abbreviation	Part Number
All PTA Series	PTA	PTA
Antenna abbreviation for Great Dane	GD	PTAGD
Number of LTE Elements	# L	PTAGD2L
*LSR400 cable - length measured in feet	50	PTAGD2L50
N type female is standard connector, simply leave blank		PTAGD2L50

* Step down the LSR400 cable to LSR200 (SMA male) with the LSR19512 jumper cable.

Custom connectors are available. Please contact us for more information.



Parsec Technologies
972-804-4600
support@parsec-t.com